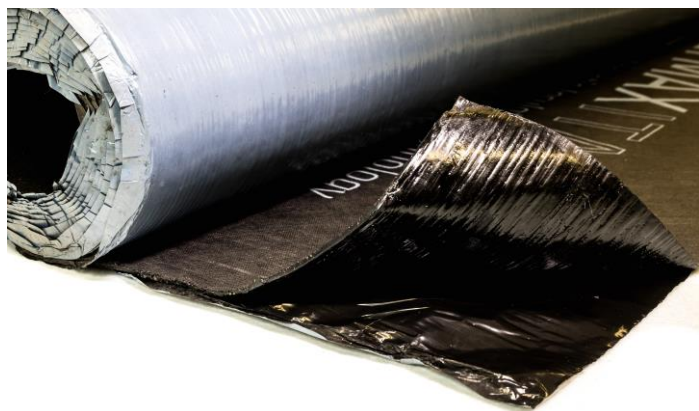


# SUPREMA 3.5 AD



## ADVANTAGES

Malleable material  
Wide range of applications  
Does not contain lead

## DESCRIPTION

Multilayer technical membrane obtained by co-extrusion of elastomeric polymer bitumen-based compounds. The product is covered with a non-woven textured polypropylene sheet, but what sets it apart is the special aluminium mesh coupled with a reinforced glass film inside the thickness of the membranes.

## FIELDS OF APPLICATION

SUPREMA 3.5 AD works as a separating and damping element and as an integrating mass close to dry walls or counter-walls before the slab or finishing panel. It represents the solution for the insulation of exhaust or vent ducts or as a soundproofing screen close to switchboards or plant shafts. Applied adherently to panels or light sheets, it reduces the resonant effects, increasing their soundproofing power.

The resistance to extreme microclimates makes SUPREMA 3.5 AD the solution for increasing the sound insulation of light roofs and for reducing impact noise from driving rain.

It is used as a soundproofing screen for exposed vertical or horizontal wooden coatings.

## SIZE

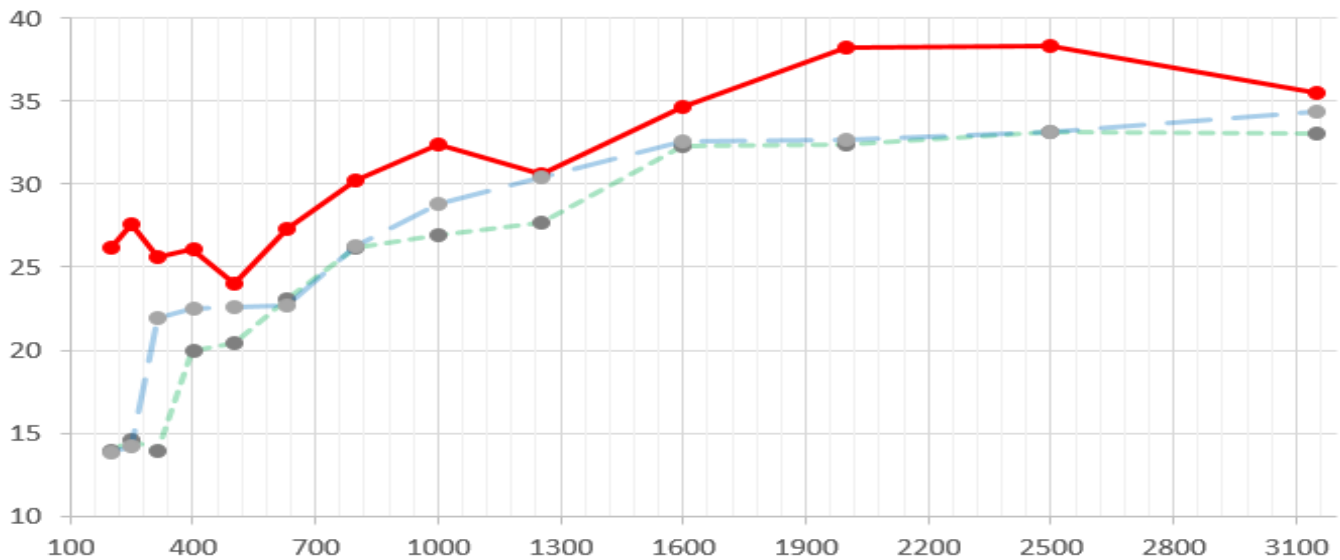
<b>Thickness</b>	mm	3,0 mm
<b>Format</b>	Roll	1,2 x 5 m
<b>Packaging</b>	Pallet	252,0 m <sup>2</sup>
<b>Weight</b>	Kg/m <sup>2</sup>	4,20 Kg/m <sup>2</sup>

## TECHNICAL INFORMATION




<b>Soundproofing capability</b>	R <sub>w</sub>	31 dB	
<b>Air mass</b>	m	4,2 Kg/m <sup>2</sup>	EN 1849-1
<b>Waterproofness</b>	μ	60 kPa	EN 1928
<b>Reaction to fire</b>	Euroclass	F	EN 13501-1
<b>Maximum longitudinal tensile strength</b>	F <sub>t,l</sub>	600 (±20%) N/50 mm	EN 12311-1
<b>Maximum transverse tensile strength</b>	F <sub>t,t</sub>	400 (±20%) N/50 mm	
<b>Longitudinal tensile elongation</b>	ΔL <sub>l</sub>	35 (±15)%	
<b>Transverse tensile elongation</b>	ΔL <sub>t</sub>	35 (±15)%	
<b>Longitudinal tear strength</b>	F <sub>l,l</sub>	150 (-30%) N	EN 12310-1
<b>Transverse tear strength</b>	F <sub>l,t</sub>	150 (-30%) N	
<b>Dimensional stability</b>	S	≤ 0,3%	EN 1107-1
<b>Low temperature flexibility</b>	U	-20 °C	EN 1109

## EXTRACTED FROM ORIGINAL CERTIFICATES

### Soundproofing capability ( $R_w$ )



### LEGEND

	SUPREMA 3.5
	Spessore 3 mm, peso 5 Kg/m²
	Spessore 2,5 mm, peso 5,5 Kg/m²

**ATTENTION:** This document is not a specific. Will be care of users establish if the product is appropriate for the intended use.

Rev. 0 - 21/05/2019

**Emanuele Bonifazi**  
Responsabile Direzione Tecnica

**POLYMAXITALIA**  
Specialisti dell' Isolamento Acustico

**POLYMAXITALIA Srl**  
Via Mestre, 4 Z.I. – 31033 Castelfranco Veneto (TV)  
Tel +39 0423 493544 Fax +39 0423 497841  
info@polymaxitalia.it – www.polymaxitalia.it